

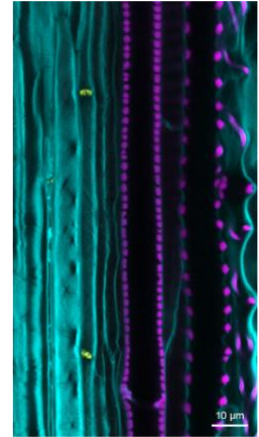
## 2 PhD positions in Plant Biology in Neuchâtel, Switzerland

The Laboratory of Cell and Developmental Physiology of Lothar Kalmbach will open in September 2024 at the University of Neuchâtel (UniNE), Switzerland and is recruiting **two PhD students**.

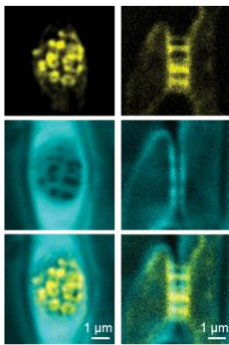
**Our work investigates** the molecular and genetic underpinnings of cellular specialization in plants. We use the phloem of the plant vascular system as a model to investigate how plant cells are adapted and remodeled for efficient transport and distribution of photosynthetic products<sup>1,2</sup>. We were awarded an SNSF Starting Grant (“Swiss ERC”) to address fundamental questions in cell wall biology and physiology at cellular and sub-cellular resolution. Our goal is to understand how specific cellular adaptations have emerged during evolution, are manifested during development and tissue differentiation, and finally determine the physical properties of long-distance transport into terminal sink tissues.

**Our work employs and develops** sophisticated genetic and molecular tools, high-resolution- and live-imaging at multiple scales, transcriptomics, cell biology, and quantitative physiology to link cellular phenomena to plant growth and metabolism.

**We’re looking for** candidates with a broad interest in plant and cell biology who want to make meaningful contributions to fundamental science as well as to enable future-proofing crop plants. We’re looking for candidates and future colleagues who are interactive, curious, and resourceful to become part of our research group at the intersection of cell and organismal physiology.



### Requirements:



- Master’s degree in biology
- Proficiency in English (oral and written)
- Previous experience in one or several of the following fields:
  - Molecular and classical genetics
  - Cell wall biochemistry
  - Confocal microscopy and/or histology
  - Plant physiology
  - Genomics and transcriptomics
  - Statistical analyses and computational approaches (e.g. using R, Python, Alphafold) is advantageous.

### We offer:

- Fully funded employment with social benefits
- Networking and workshops through membership in the CUSO Molecular Plant Science doctoral program (<https://biologie.cuso.ch>)

Located at the Lac de Neuchâtel and with spectacular views over the Alps, the plant sciences at UniNE offer a collaborative and dynamic environment. We are part of the Institute of Biology ([www.unine.ch/biologie](http://www.unine.ch/biologie)), which covers further disciplines such as microbiology, ecology, and evolutionary biology.

Western Switzerland provides a fantastic environment for plant research. Its collegial and diverse research community combined with easy and efficient national and international travel provide exceptional possibilities for collaborations and access to state-of-the-art technical platforms.

For further information, please contact Lothar Kalmbach (currently at University of Freiburg, Germany) via email ([lothar.kalmbach@biologie.uni-freiburg.de](mailto:lothar.kalmbach@biologie.uni-freiburg.de)). **To apply, please send your letter of motivation, CV, and names and contact details of two referees to [lothar.kalmbach@biologie.uni-freiburg.de](mailto:lothar.kalmbach@biologie.uni-freiburg.de).**

**Application deadline:** 30. June 2024.

**Starting dates:** Negotiable but preferably between September and November 2024.

1. Kalmbach, L. & Helariutta, Y. *Plants (Basel)* 8, (2019).

2. Kalmbach, L. et al. *Curr Biol* 33, 926-939.e9 (2023).